



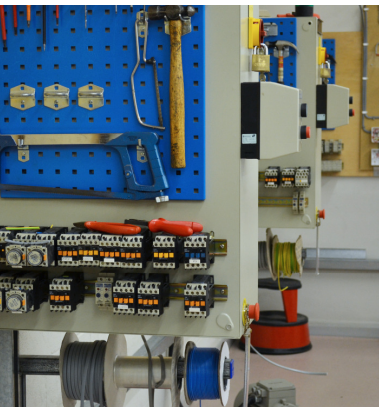
CONTROL 2K
total solutions provider



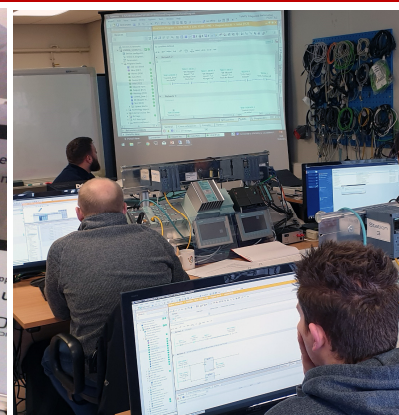
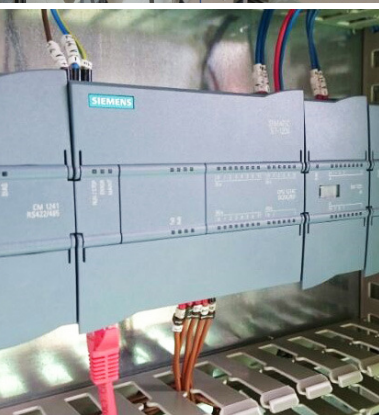
TRAINING BROCHURE

2020

+44 (0)1656 646404 www.control2k.co.uk



- Electrical & Engineering
- Control Systems
- Industry 4.0
- Quality Management
- Health & Safety, First Aid
- Business Management & Improvement



City & Guilds
Approved Centre

iosh
Approved
training
provider
4280

CHAS®

Contents:



Page 4	Electrical & Engineering
Page 5	Control Systems
Page 6	Industrial
Pages 6 & 7	Health & Safety, First Aid
Pages 8 & 9	Business Management & Improvement

New for 2020

ISO 9001:2015

A range of courses from 1 day introductory sessions to tailor-made full certification packages, delivered by our in-house Platinum BSI Consultant.

NEW!

AM2 Assessment (NET)

The AM2 Assessment of Occupational Competence (AOC) test and AM2 Competence Enhancement Training (CET) will be available as part of our new programme for 2020.

NEW!

IOSH Managing Safely

Providing managers and supervisors with the knowledge and skills they need to manage health and safety within their teams. Delegates are awarded a Managing Safely Certificate from IOSH – the world's largest health and safety membership.

£495*

ELCAS Provider status

A number of our popular City & Guilds Electrical courses have been approved as part of the MOD's Enhanced Learning Credits Scheme (ELC)



Booking Information

As a training company with 20 years of experience, we have developed great relationships with our customers and understand what works and what doesn't. Delegates often come from different companies and have mixed levels of abilities, but we ensure everyone gains from the experience and we encourage delegates to interact with each other.

Courses can be booked online or over the telephone and payment must be received in full at the time of booking. Training accounts can be set up for larger companies, subject to conditions.

To ensure our delegates get the best possible learning experience, we may reschedule or cancel a course if we don't get minimum numbers within 2 weeks of the course running. If you or your employees can't attend a course for any reason you must let us know at least 2 weeks prior to course commencement. Any cancellations received after this will mean that the course cost cannot be refunded.

For full terms and conditions, please visit www.control2k.co.uk/termsandconditions

Welcome to Control 2K

Providing Business Services in Training, Design and Systems for 20 Years

Training

We provide a wide spectrum of business training courses to industrial and retail companies. Our courses are tailored for individuals or large organisations alike. We offer accredited courses via City & Guilds, IOSH and CEIH. We also have our own company certified courses that are based on industrial experience. The training courses we offer are designed for retraining staff or new employees. We provide skills training for production and maintenance personnel, improving business processes and keeping up to date with current legislation. For more information visit www.control2k.co.uk.

Design

Looking for Enterprise Web Solutions? We specialise in all aspects of bespoke development work. As time served Microsoft.Net and Umbraco Approved developers, we have in-depth experience of mobile friendly “responsive” websites that are optimised to perform well on search engines. Our websites can include ecommerce, business productivity tools, portals and multilingual content delivery whilst being tailored to suit your project budget. For more information visit www.design2k.co.uk.

Systems Integration

We offer a Total Solutions Approach to integrate front-end office applications with back-end production systems. We have developed our own suite of Industry 4.0 software which allows businesses to connect different processes together and provide efficiency measures through the monitoring of Key Performance Indicators (KPI's). This leads to improved efficiencies and the reduction of errors in the process. For more information visit www.industreweb.com.

Call us if you require any further information on our services or courses, or visit us to experience the facilities and demonstrations of our Virtual Factory.

Course Title	Days	Price*
Electrical Skills - Basic with Industrial / Domestic practical emphasis	5	£725
IOSH - Managing Safely	3	£495
18th Edition (Full Course) City & Guilds (2382 - 18) Full Course Includes IET Textbook	3	£468
City and Guilds 2391-52 Combined Combining Periodic Inspection and Initial Verification	5	£780
Portable Appliance Testing City & Guilds (2377 - 22)	1	£300
Part P Building Regulations City & Guilds (2393 - 10)	1	£300
Siemens TIA Portal	4	£780
Mechanical to Electrical Conversion Course (includes 2 day PAT Testing 2377-22 Qualification)	10	£1695

Popular Courses

**City & Guilds examination fees and all text-books required for each course are included in the price.
Hot buffet meals are included with every in-house course.**

City & Guilds Accredited Electrical Courses

	Ref	Days	Price*
IET Regulations - 18th Edition (Full Course) City & Guilds 2382-18 To enable delegates to gain knowledge of the objectives and application of 18th Edition Installations.	ELEC0060	3	£468
Level 3 Award in the Initial Verification of Electrical Installation (2391-50) A course aimed at practising electricians who have not carried out inspection & testing since qualifying or who require some update training before going on to the 2391-50.	ELEC0030	4	£700
City and Guilds 2391-52 Combined This course covers both Periodic Inspection and Initial Verification. Aimed at electrical personnel who either carry out, or supervise, the testing and inspection of installations.	ELEC0050	5	£780
City and Guilds 2391-51 Level 3 Award in Periodic Inspection and Testing of Electrical Installations A course specifically created for Domestic Electrical Installers, Testing and Initial Verification gives you the necessary skills and confidence to inspect and test fundamental installations and conduct initial verification - a qualification that proves ability.	ELEC0020	4	£700
Code of Practice for in-service Inspection & Testing (PAT) (City & Guilds 2377-22) Enables delegates to acquire skills and knowledge to be able to instigate and implement a testing programme for portable electrical appliances. Examination held on separate day.	ELEC0040	1	£300
Part P Building Regulations (City & Guilds 2393-10) The course provides instruction on the relevant parts of the building regulations and approved documents. It will help anyone wanting to become part of the competent person scheme.	ELEC0080	1	£300
PAT Workshop (City & Guilds 2377-22 — Non Electrical Personnel) This course is designed for non electrical delegates. This in depth course delivered over 2 days will allow the attendants the ability knowledge and understanding to allow for successful completion of the C&G 2377 –22 qualification Portable Appliance Testing. Examination held on separate day.	ELEC0070	2	£475

Control 2K Electrical & Engineering Courses

	Ref	Days	Price*
Basic – Electrical Skills: DOMESTIC or INDUSTRIAL This is an ideal course for the mechanically biased tradesperson looking to move into a more multidisciplinary role. The course provides a good introduction towards electrical competency. Domestic course is an ideal prerequisite for the IET Regulations 18th edition course. Industrial course is aimed towards maintenance technicians and engineers.	Domestic ELEC0230 Industrial ELEC0240	5	£725
Mechanical – Electrical Principles Conversion Course Part 1 M-E Starts from the basics of electrical principles, along with practical exercises to consolidate understanding. Allowing candidates the self-assurance to complete Part 2 M-E covers both the theory and practical issues of Safe Isolation, motor testing and wiring of DOL, Star-Delta, Soft Start and Variable Speed Drives, allowing candidates the self assurance and confidence to deal with situations with certainty. <i>Course includes 2377-22 Qualification</i>	ELEC0210	10	£1695
Electricity at Work Regulations (1989) / Duty Holder To help employers and employees gain the knowledge and understanding needed to satisfy the requirements of these EAW regulations and the subsequent responsibilities of the duty holder or appointed person.	ELEC0220	1	£300
Safe Isolation - Single & Three-Phase Installations Course covering Identification of Single & Three-Phase Supplies, Locking Mechanisms, Test Instruments and Lock-Out Tag-Out procedures.	ELEC0250	1	£300

If the course you're looking for is not listed, please contact us on **01656 646404** or email **training@control2k.co.uk** to discuss your requirements.

Control Systems Courses

	Ref	Days	Price*
Siemens TIA Portal PLC V14 Focused on TIA Portal (V14) Software, this course gives you all the basics to configure, program and fault find on the new Siemens S7-1500 range. Basic HMI functionality is also covered.	CTRL0110	4	£780
Siemens S7 PLC This course is centered around the older range of PLC's such as the S7-300 and ET200 Pro ranges. It covers the configuration, programming and fault finding utilising a mini manufacturing rig using SIMATIC S7 v5 software.	CTRL0090	4	£780
Siemens HMI & WinCC Flex Designed for engineers, this course covers everything you would need to know about setting up a Siemens HMI using the WinCC Flex software package. Content includes configuring a project & communication, designing screens using standard controls, recipes, alarms and messages.	CTRL0120	2	£400
Siemens S7 PROFINET / PROFIBUS Suitable applicants would have previous knowledge of Siemens S7/TIA Portal. This training focuses on practice to fill in the missing links of modern Ethernet networks using simple methods; how to analyze and solve a complex PROFINET/PROFIBUS breakdown using the necessary tools.	CTRL0140 CTRL0130	2	£400
Allen Bradley PLC- RS Logix 500 or 5000 - Basic To introduce delegates to the main features and tools of Allen Bradley PLC's series systems and RS-Logic 500 / 5000 software.	CTRL0030 CTRL0040	2	£400
Allen Bradley PLC- RS Logix 500 or 5000 - Intermediate Following the basic course, delegates will gain an understanding of the Allen Bradley RS Logix Studio 500 or 5000 system to an intermediate level. Including more complex program structures, in-depth programming and fault finding features touching on PanelView HMI communications.	CTRL0050 CTRL0060	3	£600
Omron PLC - Basic A good introduction to PLC's providing delegates with knowledge of PLC hardware and its functionality through to a basic familiarity with the CX-Programmer software suite.	CTRL0160	2	£400
Omron PLC - Intermediate Provides delegates with an understanding of the more in-depth features of the Omron PLC including additional ladder logic functions and diagnostic features of the CX Programmer suite.	CTRL0170	3	£600
Omron HMI This course has been designed to familiarise maintenance Engineers, Technicians, Electricians with the operation, configuration, programming of an Omron HMI Series Programmable controller and the use of Omron CX-Designer software.	CTRL0150	2	£400
Introduction to CNC Programming Learn and understand the basic principles of CNC and CNC Programming. It covers CNC geometry, offsets, programming codes with the focus on hands on practical experience.	CTRL0020	2	£600
Mitsubishi PLC - Basic An introduction to the Mitsubishi Q,L and FX PLC products. It explains the basic hardware structure and introduces the first basic steps of PLC programming using the GX Works2 PLC Programming software in simple mode with labels.	CTRL0190	2	£400
Mitsubishi PLC - Intermediate Based around the GX Works2 software in simple mode with labels, this course will run through the advanced features of the Q, L, & FX PLCs. Concentrating on the applied instruction set, delegates will be able to use mathematical functions, interface with analogue units and use complex instructions.	CTRL0200	3	£600

Our clients say...

"I would very highly recommend the staff and courses from Control 2k"

– Mark Clewer, Swindon

Industrial Engineering Courses

	Ref	Days	Price*
Pneumatics / Hydraulics A 'hands on approach' designed for maintenance engineers, technicians or operators, in order to improve efficiency, maintenance and fault location. The course delivers a basic understanding of pneumatic, electro pneumatic and hydraulic systems, equipment, symbols and drawings.	INDR0030	3	£525
Welder Training Scheme (Level 1 Novice) This level is suitable for students who have never welded before or have had the equivalent of just a few days work experience. This course will provide a good academic understanding of the MMA, MAG, and TIG welding processes, fabrication and welding safely.	INDR18L1	3	CALL
Welder Training Scheme (Level 2 Basic Experience) This level is suitable for an experienced welder with the capability of achieving fillet and butt welds in plate in both MMA and MIG/MAG.	INDR18L2	3	CALL
Welder Training Scheme (Level 3 Accomplished Welder) This level is for the experienced welder with the capability of achieving fillet and butt welds in plate in both MMA and MIG/MAG. This course is tailored to the needs of each individual delegates and the price is per day of tuition.	INDR18L3	1	CALL
First Line Diagnostics A practical course designed for Maintenance Engineers, Multi Skilled Engineers and Technicians who need to have a clear and methodical approach when responding to a plant breakdown. This course will improve the diagnostic approach and lead to faster identification and resolution of faults.	INDR0040	5	£795
Second Line Diagnostics This course comprises of a series of practical exercises aimed at engineers, technicians and breakdown response teams. Candidates will be able to implement the knowledge gained into their own specific work environment, making fault finding more efficient and reducing financial losses incurred by unexpected down time.	INDR0050	3	£525

IOSH

	Ref	Days	Price*
IOSH - Managing Safely The number one health and safety course for line managers, in any sector, worldwide. This course will ensure you can assess and control risks and hazards, understand your responsibilities around health and safety, enable you to investigate incidents and gain the knowledge, skills and confidence to manage health and safety within your team.	HSAF0400	3	£495
National General Certificate This course covers the main legal requirements for health and safety in the UK, identification and control of workplace hazards, and the practical application of this knowledge. See website for full description and details.	HSAF0020	10	£1495

First Aid (CIEH Accredited)

	Ref	Days	Price*
CIEH Foundation Certificate in First Aid at Work (Level 2) Ensures delegates are able to respond confidently to a range of first aid incidents and emergencies. Will provide you with the skills and knowledge to give emergency first aid in a low risk work place. Suitable for anyone over the age of 16.	HSAF0520	1	£295
CIEH Intermediate Certificate in First Aid at Work (Level 3) Provides delegates with sufficient skills and knowledge to carry out the role of a First Aider in the workplace in accordance with current legislative requirements. Suitable for anyone wishing to be the designated First Aider in the workplace.	HSAF0510	3	£680
CIEH Refresher Course - Intermediate Certificate in First Aid at Work (Level 3) To renew your First Aid at Work Certificate once it has expired after 3 years, you will need to take Refresher Training to keep your skills up-to-date and to make sure that you are aware of new techniques and advancements that will help with providing more effective treatment.	HSAF0515	2	£450

Contact us to discuss on-site training at the lower cost of £850 plus VAT per day for 10 delegates on selected courses.

CIEH Accredited Courses

	Ref	Days	Price*
Fire Safety Awareness (Level 1) To enable employers to meet their duties under current fire safety legislation by providing employees with essential knowledge about fire safety	HSAF0260	1	£150
CIEH Introductory Occupational Health & Safety (Level 1) This course provides an awareness of key health & safety issues and the part that workers should play in keeping themselves and others free from harm at work. Suitable for employees at all levels, new workers required to take induction training or part of a work experience programme.	HSAF0110	0.5	£150
CIEH Occupational Health & Safety (Level 2) Supports businesses in their legal obligations to ensure employees are protected from harm. This course will focus on common hazards and how to control them. Suitable for individuals at all levels within employment.	HSAF0120	1	£295
CIEH Intermediate Occupational Health & Safety (Level 3) With a focus on the role of supervision, delegates of this course will develop the essential knowledge and understanding to enable them to discharge health & safety responsibilities. Suitable for managers and supervisors within the workplace, or learning / development coaches.	HSAF0130	3	£680
CIEH Foundation Certificate in Manual Handling (Level 2) Legislation requires employers to take appropriate steps to reduce the risk of injury to employees. This qualification combines the theory and practical elements of manual handling. It teaches techniques to lift, carry, push and pull objects safely.	HSAF0080	0.5	£150

Half Day Courses

	Ref	Days	Price*
Asbestos Awareness This course is aimed at the construction industry and maintenance contractors, and other ancillary workers who could come into contact with asbestos.	HSAF0230	0.5	£150
Banksman Training To provide delegates with suitable information to assist them to carry out Banksman activities in relation to on-site movements safely in accordance with current Health and Safety legislation.	HSAF0250	0.5	£150
Ladder Safety To provide delegates with suitable information to assist them to select, use and inspect ladders in accordance with current Health and Safety legislation.	HSAF0220	0.5	£150
Abrasive Wheel Safety (Portable Grinders) To provide delegates with suitable information to enable them to change the cutting discs on portable grinding machines and to use them safely in accordance with the requirements of the provision and use of Work Equipment Regulations 1998 (PUWER).	HSAF0140	0.5	£150
Principles of COSHH (Level 2) Prepare employees to contribute to the safer use of hazardous substances in cooperation with their managers and supervisors.	HSAF0100	0.5	£150

Our clients say...

“Fantastic instruction throughout. All staff are extremely pleasant and helpful. A fantastic Training establishment. I can't wait to put what I've learnt into practice.”

- Ministry of Defence

Full Courses

	Ref	Days	Price*
Safe Use of Power Presses This programme has been developed to educate personnel who have responsibility directly or indirectly for the provision and use of power presses.	HSAF0190	1	£295
Working at Heights The programme has been developed to introduce delegates to the requirements of the current "Working at Heights Regs" which came into effect in April 2005, so that the individual can comply with his/her duties, whether planning, controlling or conducting work tasks at height.	HSAF0180	1	£295
Working Safely in Confined Spaces This programme has been developed to introduce delegates to current Health & Safety requirements when confined space work is being carried out.	HSAF0170	1	£295
Safe Use of Power Hand Tools This programme has been developed to introduce delegates with sufficient information to assist them while using power hand tools safely in accordance with current Health & Safety legislation and best work practices.	HSAF0160	1	£295
Safe Use of Engineering Workshop Equipment This programme has been developed to provide delegates with an understanding of major risks in workshops and how to control them to minimise injuries.	HSAF0150	1	£295
Warehouse Health & Safety The course has been developed to assist in the identification of hazards and risks present in a warehouse environment and to put in place precautions to control these.	HSAF0050	1	£295
Permit to Work Awareness The course aims to provide delegates with an understanding of how Permit to Work systems operate, and assist them to assess the requirements of a particular job or task.	HSAF0040	1	£295
Safe Use of Abrasive Wheels This course is designed for individuals who may be required to use an abrasive wheel in the workplace or require familiarisation with the associated regulations.	HSAF0210	1	£295
Safe Use of Lifting Equipment The lifting operations and lifting equipment regulations 1998 (LOLER) which replaced most existing laws relating to the use of lifting equipment.	HSAF0200	1	£295
Principles of Risk Assessment (Level 2) Designed to help improve the workplace culture for occupational health and safety by enabling learners to understand the basic principles of risk assessment.	HSAF0090	1	£295

ISO 9001:2015

	Ref	Days	Price*
Introduction to ISO 9001:2015 A simplistic overview of what the ISO 9001:2015 standard requires. This course will benefit those who are managing, or would like to manage an ISO based quality management system.	BMBI0510	1	£345
Internal Auditors Training Designed for those individuals who are looking to become internal auditors, or those currently conducting internal audits and require a greater understanding of their roles and responsibilities. This course looks at the requirements of the ISO 9001:2015 standard, those of the business and how to add value to report writing, time management and presentational skills.	BMBI0520	3	£585
Certification to ISO 9001:2015 Tailored training to suit your business requirements. This package covers the basics of the ISO 9001:2015 standard and provides help to develop your policies and procedures, training to become an internal auditor and implement your ISO management systems. Also includes arrangements for a UKAS accredited certification body to assess your company and grant ISO 9001:2015 certification.	BMBI0530	TBC	CALL

Contact us to discuss your individual business requirements.

Lean Tools and Techniques

	Ref	Days	Price*
Lean Awareness An overview of Lean Thinking to enable processes to be delivered better, faster and cheaper.	BMBI0130	1	£295
Value Stream Mapping VSM Learn mapping techniques used to identify wastes in processes.	BMBI0140	1	£295
5S An excellent introduction to the 5S methodology, this course incorporates the use of visual displays and visual controls to minimise clutter and introduce orderly process to the work place. SORT, SET, SHINE, STANDARDISE and SUSTAIN.	BMBI0150	1	£295
Continuous Improvement Introducing continuous improvement techniques that can be applied to any environment creating efficiencies through process mapping to deliver sustainable improvement.	BMBI0160	1	£295
Total Productive Manufacturing This course is particularly useful in recognising methods and training in how to increase the output of equipment.	BMBI0170	1	£295
Changeover Reduction (SMED) To ensure delegates understand the systematic approach to the measurement and reduction of lost production time.	BMBI0180	1	£295
6 Sigma Yellow Belt Training This highly interactive course is designed for people who will get involved in six sigma improvement projects in their workplace.	BMBI0190	1	£295

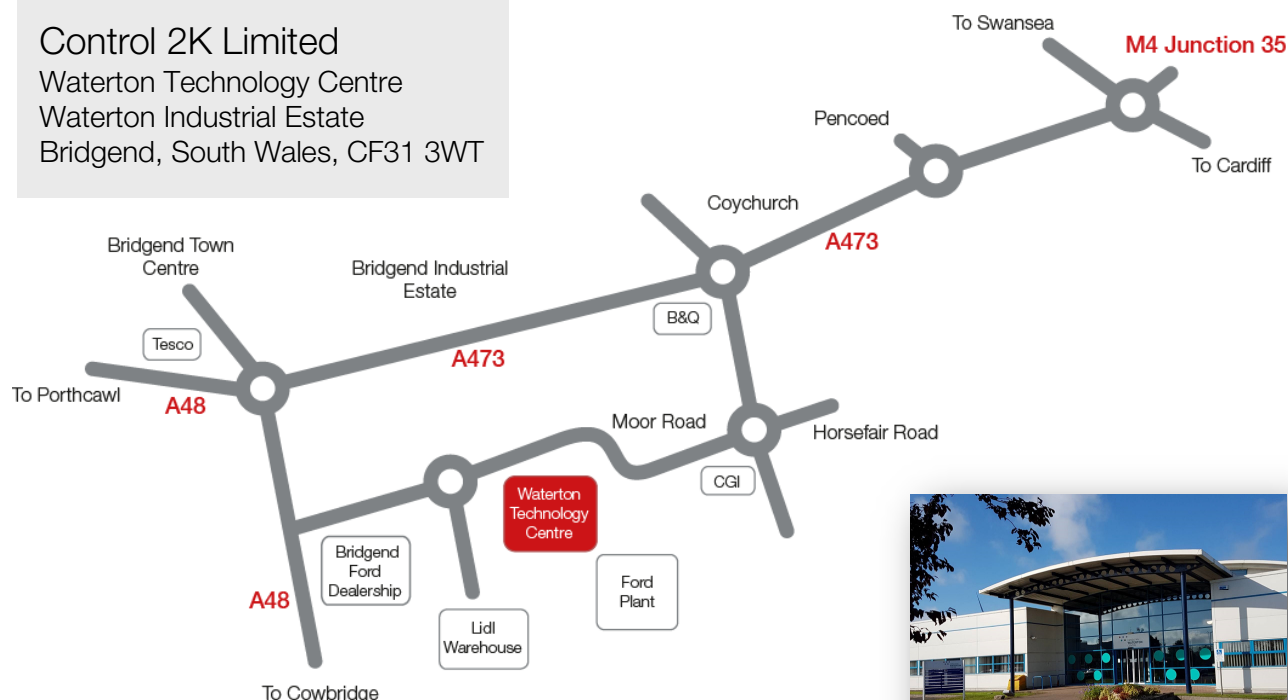
Business Improvement

	Ref	Days	Price*
Problem Solving and Decision Making To familiarise delegates with the techniques involved in effective problem solving and decision making.	BMBI0230	1	£295
FMEA General To ensure delegates understand how FMEA assists in the prevention of concerns through a multi-disciplined structured approach to the analysis of potential failure modes.	BMBI0100	1	£295
Lean Coach Programme Extensive coach training delivered over 5 days teaches delegates all the lean tools and techniques available to them and how to apply them within their sector.	BMBI0240	5	CALL
Train the Trainer An intensive one-day Fast Track course. Serving as an introduction to training, the course covers the major elements of training. Delegates are taught essential training skills including communication, presentation, and questioning.	BMBI0250	1	£295
APQP To provide the structured methods of defining and establishing the steps necessary to ensure that a product satisfies the customer.	BMBI0120	1	£295
PPAP To convey an understanding of the requirements of PPAP for production and service commodities.	BMBI0110	1	£295

Business Management

	Ref	Days	Price*
Strategy Direction Setting A practical training in business strategy.	BMBI0410	1	£295
Effective Leadership Develop skills and abilities to ensure effective leadership of a team and its managers maximising performance.	BMBI0470	1	£295
Negotiating & Influencing Skills This highly interactive course is designed to equip managers and supervisors in negotiating and influencing tools and techniques.	BMBI0420	1	£295
Project Management The course aims to provide managers with an understanding of the various techniques available and how they may be used in the management of projects.	BMBI0430	1	£295

Control 2K Limited
Waterton Technology Centre
Waterton Industrial Estate
Bridgend, South Wales, CF31 3WT



Via M4 Junction 35

- Exit the M4 at Junction 35 and follow signs for Bridgend
- Take the first exit (straight on) at the next roundabout (Pencoed / Mercedes dealership)
- At the next roundabout take the first exit (left) onto Brocastle Avenue (signposted Waterton Industrial Estate)

Via A48 Cowbridge — Bridgend

- Turn off the A48 at the traffic lights, as if you were going into the Bridgend Ford Dealership
- Continue past the showroom
- Go straight over the roundabout, (keeping left) for about 200 yards
- Waterton Technology Centre is the white building on your right

Free parking is available at the Centre.

Waterton Technology Centre is an accessible building, please contact us for any assistance.

Our clients say...

"The course facilities were exceptional
the tutor was the best instructor I had in 40 years!"

– Finsbury Foods, Cardiff

**Control 2K Ltd, Waterton Technology Centre,
Waterton Industrial Estate, Bridgend, CF31 3WT**

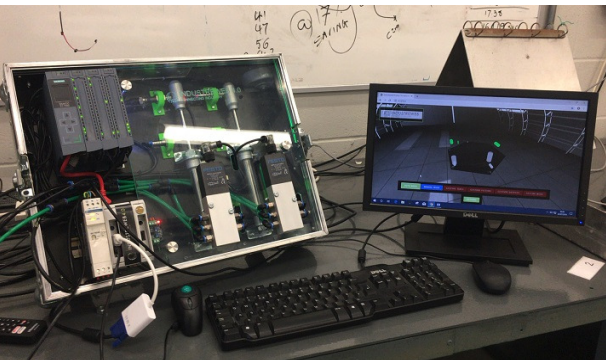
Here's a little snapshot of our facilities at Waterton:



Our training equipment features **Siemens, ABB Schneider, Omron and Rockwell AB** rigs.



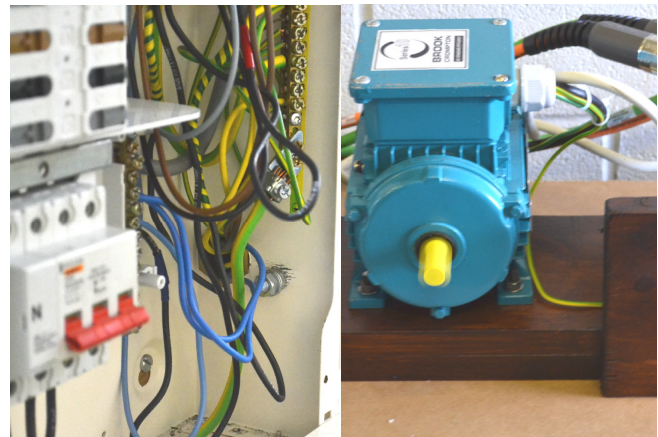
Fully furnished equipment means our courses are packed with a variety of practical topics.



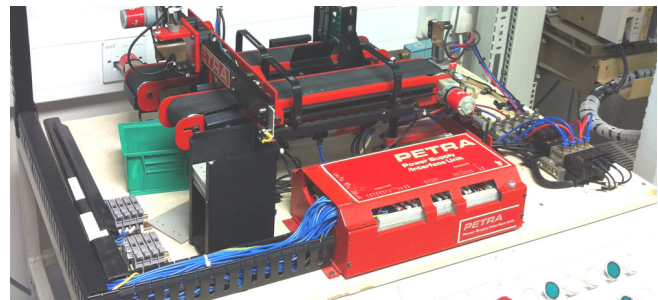
Our Virtual Factory presents students with the opportunity to engage with the latest digital manufacturing technologies



Our new training rigs now feature the Siemens S7-1500 PLC connected to a range of sensors and networked systems so that we can teach the latest techniques to implement Industry 4.0 methodology. Visit our website for full details.



Whilst the new technology is important to learn, its even more important to understand the basics too.



For a complete practical training experience, call us today on **01656 646404** or visit our website **www.control2k.co.uk**



CONTROL 2K
total solutions provider

City & Guilds
Approved Centre



At Control 2K we provide solutions for the key areas of your business:
Training, Design & Systems

*"Bringing you a quality experience
unrivalled by any other provider"*

Control 2K Limited

Waterton Technology Centre,
Waterton Industrial Estate,
Bridgend, South Wales, CF31 3WT

T: 01656 646404
W: www.control2k.co.uk
E: training@control2k.co.uk

Find us on [Facebook.com/control2k.co.uk](https://www.facebook.com/control2k.co.uk)

Follow us at twitter.com/Control2k

Link with us at [linkedin.com/company/control-2k](https://www.linkedin.com/company/control-2k)

